



# Jinks Aston

# FOR SALE





## 7 Goulden Street, Crewe, Cheshire, CW1 3LB

**£119,995**

A two bed mid terraced property, benefiting from GCH and PVC DG within walking distance of town centre. Accommodation: porch area, two reception rooms, kitchen, bathroom to first floor (accessed off both bedrooms). Front paved area. Rear patio and garden area.

**Jinks Aston Ltd**  
The Willow Suite  
Church Farm  
Middlewich Road  
Bradfield Green  
Crewe, Cheshire  
CW1 4QZ

**01270 257173**  
[sales@jinksaston.co.uk](mailto:sales@jinksaston.co.uk)  
 [facebook.com/jinksaston](https://facebook.com/jinksaston)  
 [@jinksaston](https://twitter.com/jinksaston)

### **Entrance Porch**

Giving access to the main front lounge.

### **Front Lounge**

Bay window to the front, panel radiator, Pine fireplace (No Fire) door giving access to the rear lounge/dining room.

### **Rear Lounge**

PVC double glazed window to the rear, door giving access to an under stair cupboard, T.V. point, panel radiator, door giving access to the kitchen.



### **Kitchen**

Having a range of wall and base units with integrated oven and 5 ring gas hob, sink and drainer, tiled flooring, window to the side elevation and PVC door gives access to the rear garden.



### **Landing**

Having 2 doors giving access off to all rooms.

### **Bedroom 1**

PVC Double glazed window to the front, Cast Iron Fire Place, radiator door giving access to the landing.



### **Landing**

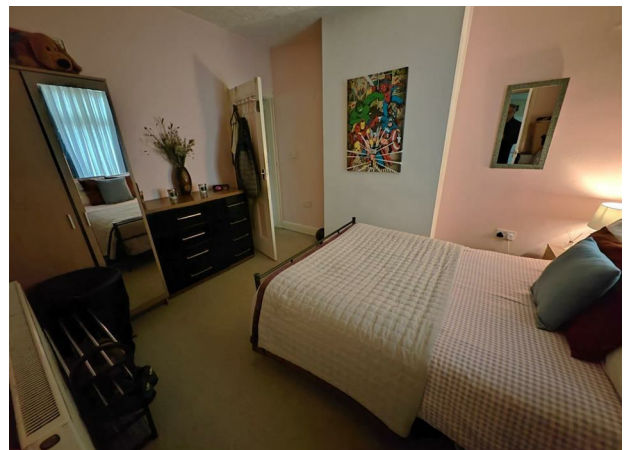
Having doors giving access off to all rooms.

### **Bedroom 2**

PVC double glazed window to the rear, panel radiator.

### **Bathroom**

Having a white 3 piece suite comprising of: low level W.C. wash hand basin with vanity unit, panel bath with shower over, PVC opaque window to the rear elevation, panel radiator, double cupboard housing the Combi boiler.



### **Externally**

To the rear we have a rear garden with lawn and patio area.

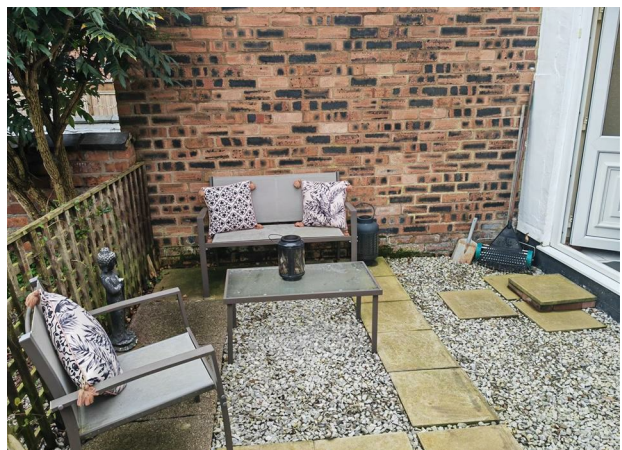
### **Services**

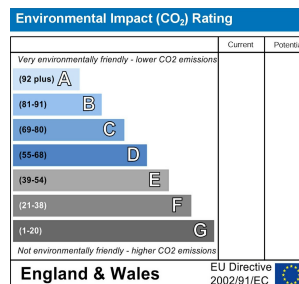
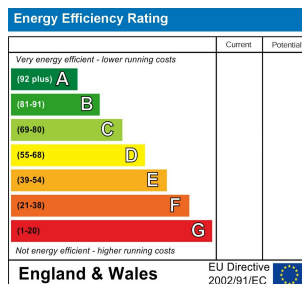
All main services (not tested).

## Tenure

The tenure of the property is understood to be freehold (this should be verified prior to commitment)

## Council Tax A





**Jinks Aston Ltd**  
The Willow Suite  
Church Farm  
Middlewich Road  
Bradfield Green  
Crewe, Cheshire  
CW1 4QZ

**01270 257173**  
[sales@jinksaston.co.uk](mailto:sales@jinksaston.co.uk)  
 [facebook.com/jinksaston](https://facebook.com/jinksaston)  
 [@jinksaston](https://twitter.com/jinksaston)